

Sawyer County Airport

Airport Master Plan



AGENDA

1. Welcome/Introductions
2. Purpose of the Master Plan
3. National Plan of Integrated Airport Systems (NPIAS) Role
4. Airport Information
5. Master Plan Process
6. Role of the Planning Advisory Committee
7. Strengths, Weaknesses, Opportunity, & Threats (SWOT) Analysis
8. Open Discussion/Questions

PURPOSE OF THE MASTER PLAN

- ▶ Provides a visioning document to guide Sawyer County and other decision makers regarding the future development of the airport over the next 20 years
- ▶ Evaluates the airport aviation demand potential
- ▶ Addresses local, regional, and national changes in the aviation industry that could impact the development of the airport
- ▶ Identifies and plans for potential capital projects well in advance so proper coordination, approvals, financing, design, and construction can take place in a timely manner
- ▶ Obtains approval of new aviation demand forecasts and an updated Airport Layout Plan (ALP)
- ▶ Increases stakeholder/public awareness of the airport's goal and objectives

THE NATIONAL PLAN OF INTEGRATED AIRPORT SYSTEMS

▶ *What is the NPIAS?*

- ▶ Identifies airports significant to air transportation and eligible to receive federal funding
- ▶ Categorizes airports by their role in the national system
- ▶ Provides a 5-year estimate of Airport Improvement Program (AIP) eligible development
- ▶ Federal Aviation Administration (FAA) reevaluates and updates every two years

▶ *NPIAS principles – airports should...*

- ▶ Be safe, efficient, and developed to appropriate standards
- ▶ Be flexible and expandable, able to meet increased demand and accommodate new aircraft types
- ▶ Be compatible with surrounding communities
- ▶ Be adaptable to new technology and airspace changes

2023-2027 NPIAS CATEGORIES AND ROLES

FAA Airport Classifications		
Airport Category		Regional Example
Primary Commercial Service	Large Hub	Minneapolis-St. Paul International Airport (MSP)
	Medium Hub	General Mitchell International (MKE)
	Small Hub	Appleton International (ATW)
	Nonhub	Duluth International (DLH)
Nonprimary Commercial Service		International Falls/Einarson Field (INL)
Reliever		Lawrence J Timmerman (MWC)
General Aviation	National	Waukesha County (UES)
	Regional	Wausau Downtown (AUW)
	Local	Sawyer County Airport (HYR)
	Basic	Cable Union (3CU)
	Unclassified	Crivitz Municipal (3D1)

SAWYER COUNTY AIRPORT'S ROLE IN THE NPIAS

▶ Wisconsin NPIAS Airports

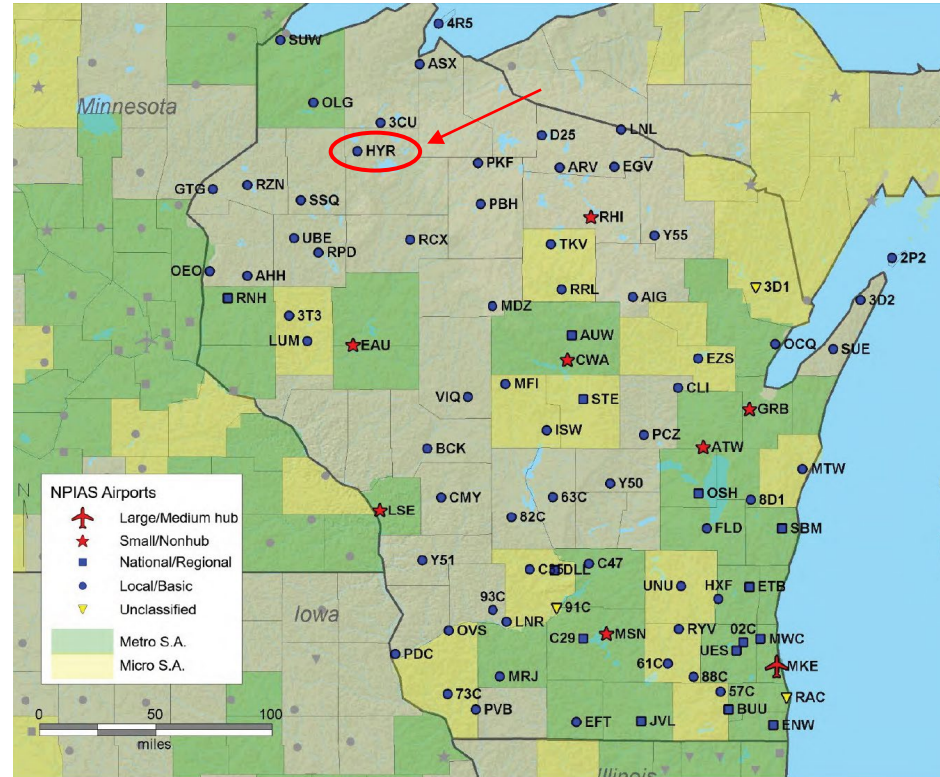
- ▶ **86 Total**
- ▶ 8 Commercial Service
- ▶ 78 General Aviation
 - ▶ 15 National/Regional
 - ▶ 60 Local/Basic
 - ▶ 3 Unclassified

▶ Sawyer County

- ▶ Local GA Airport

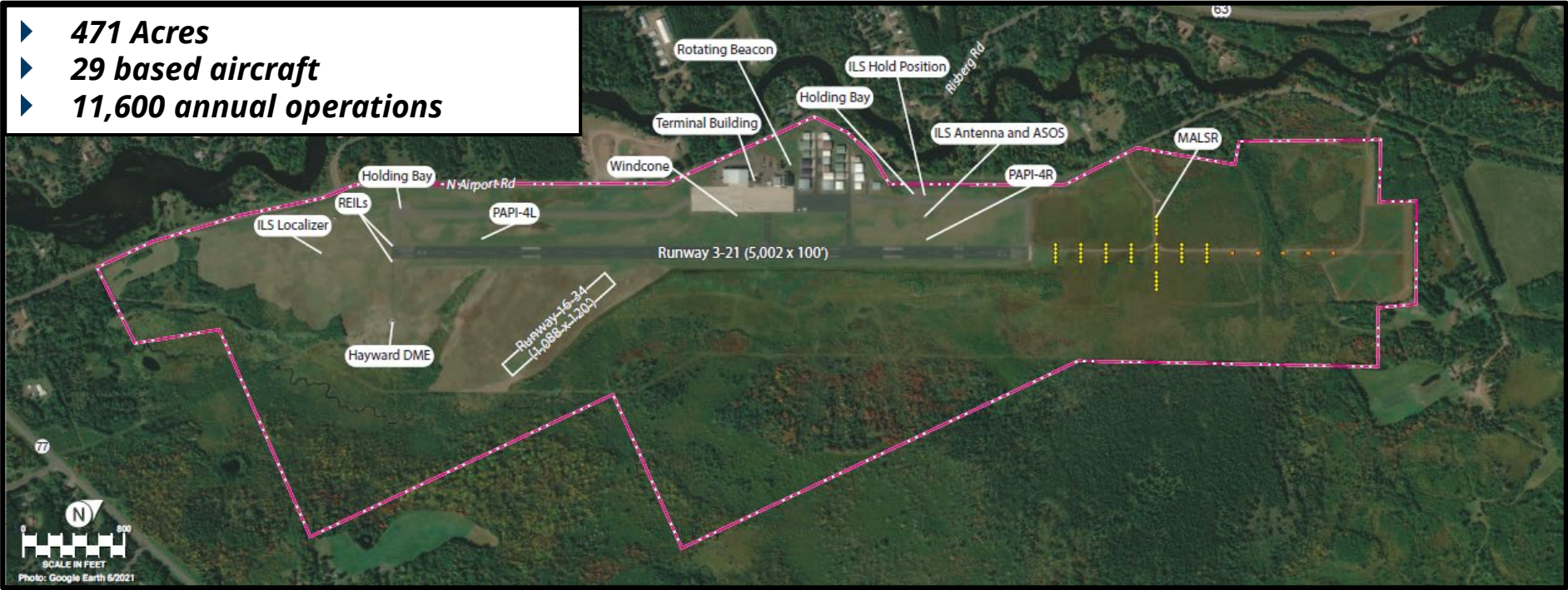
▶ Local GA Airports...

- ▶ Account for 36% of all NPIAS airports
- ▶ Located near population centers
- ▶ Moderate activity
- ▶ Average 33 based aircraft (piston)



AIRPORT INFORMATION

- ▶ **471 Acres**
- ▶ **29 based aircraft**
- ▶ **11,600 annual operations**

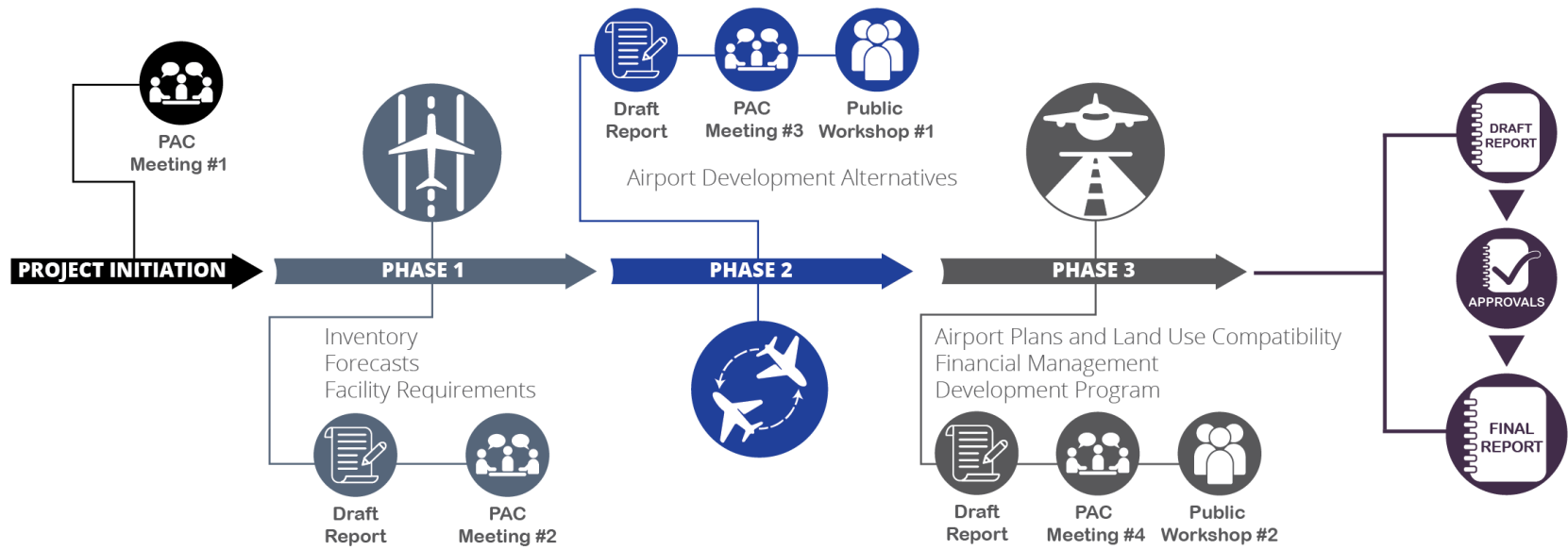


- ▶ **Top activities**
 - ▶ Recreational flying
 - ▶ Business flying

- ▶ **Runway 16-34**
 - ▶ Seasonal
 - ▶ 1,088' x 120' (Turf)

- ▶ **Runway 3-21**
 - ▶ 5,002' x 100' (Asphalt)
 - ▶ ILS precision approach
 - ▶ RNAV GPS approaches

Master Plan Process and Elements



ROLE OF THE ADVISORY COMMITTEE

- ▶ The **purpose** of the Planning Advisory Committee (Committee) is to provide Sawyer County and the planning consultant (Coffman Associates) with input into the Master Plan.
- ▶ The **members** of the PAC are intended to represent a variety of organizations and individuals with interest in the use and development of the Sawyer County Airport. These include governmental interests, aviation and non-aviation interests, and area economic development interests.
- ▶ The **role** of the PAC is to review elements of the study while they are in draft form and comment on the accuracy of the assumptions and relevance of the information used to develop the report.
- ▶ The PAC is a *non-voting advisory body*. While all comments made by the Committee members will be considered by the Consultant in developing the draft and final versions of the report, the PAC will not vote to approve or disapprove elements of the study.

EXPECTATIONS OF THE ADVISORY COMMITTEE

- ▶ **Committee meetings** will be held periodically throughout the preparation of the Master Plan. There are four (4) meetings planned at this time. Attendance is strongly encouraged. If you are unable to attend any given meeting, please send a representative who can speak for you or your organization. A series of two (2) **Public Information Workshops** will be held following committee meetings, and members of the PAC and their organizations are invited to attend.
- ▶ During the master plan process, phase reports will be sent to PAC members approximately one week before the PAC meeting. It would be greatly appreciated if **comments** are submitted within two weeks following the meeting, although phase reports are considered draft until the end of the project, so feel free to provide comments for phase materials at any point prior to the final report. Comments can be submitted electronically through the project website dedicated to this study (www.sawyercounty.airportstudy.net).
- ▶ Comments or questions regarding the PAC, meetings, or working papers should be directed to Mitch Stamp with Coffman Associates at 602-993-6999.



NEXT STEPS

- ▶ **Phase 1 Elements** – Inventory, Forecasts, & Facility Requirements
- ▶ **PAC Meeting #2** – September timeframe; draft documents available for review approx. one week prior to meeting
- ▶ **Public Information Workshop #1** – held same day as PAC meeting #2; we encourage you to invite your associates and members of the public
- ▶ **Phase 2 Element** – Begin work on Airport Development Alternatives following PAC meeting #2 and discussion with group

QUESTIONS?

We want to hear from you!

Direct any questions or comments after this meeting to Mitch Stamp with Coffman Associates at 602-993-6999 or mstamp@coffmanassociates.com or visit the project website to submit comments online.

<https://sawyercounty.airportstudy.net/>